

COMPANY PROFILE



# NORLAND

CIVIL ENGINEERS AND CONTRACTORS

[WWW.NORLAND.CO.ZA](http://WWW.NORLAND.CO.ZA)

## INDEX

---

WHO WE ARE .....	2
WHAT WE DO .....	3
OUR EXPERIENCE & ACCOMPLISHMENTS .....	4
OUR PROJECTS.....	5
MORE ABOUT US.....	6
OUR REPUTATION .....	7
OUR EQUIPMENT .....	8
APPENDIX A – COMPANY INFORMATION AND CONTACT DETAILS .....	9
APPENDIX B – COMPANY STRUCTURE .....	10
APPENDIX C – EXPERIENCE	
ROADS .....	11
MUNICIPAL INFRASTRUCTURE .....	13
BUSINESS INFRASTRUCTURE.....	14
TOWNSHIP DEVELOPMENTS .....	14
APPENDIX D – CLIENTS .....	15
APPENDIX E – CONSULTANTS .....	16



## WHO WE ARE

**Norland Construction (Pty) Ltd** was founded in **1970**, specialising in the field of Civil Engineering Construction. The owners of the Company are qualified **Civil Engineers** and adopt a hands-on approach in the execution of their contracts. Their combined engineering expertise, managerial skills and appropriate equipment resources ensure that the company is able to construct and deliver workmanship of the highest quality and within the time constraints required by the client. **Norland Construction** has embraced the principles of empowerment and currently holds a **Level 1 B-BBEE scorecard**. We have a CIDB grading of **8CE**, and we are registered on the Central Supplier Database. See **Appendix A** for our **Company Details**.



engineering  
expertise



managerial  
skills



equipment  
resources



## WHAT WE DO

---

The activities and operations of the **Norland Group** include the following specific construction sectors:

- Urban and Rural Roads, Bridges and Interchanges
- Township Infrastructure
- Water and Sewerage Treatment Works
- Concrete Reservoirs and Pipelines
- Specialized Concrete Slip Formed Microwave Towers
- Airport Runways
- Dams, Irrigation Canals and other Bulk Earthworks





## OUR EXPERIENCE & ACCOMPLISHMENTS

---

**Norland Group** has an outstanding record of experience and accomplishments, borne out by the successful completion of a variety of projects.

The Company attributes much of its success to the **commitment** and **dedication** of its personnel, the structure of which can be seen in the attached organogram - **Appendix B.**





## OUR PROJECTS

---

**Norland Group** is one of the larger, respected construction companies operating mainly in the **Eastern Cape** of the Republic of South Africa. The Company is well known to Provincial Governing Bodies, Municipalities and Private Institutions involved in the development of Civil Infrastructure.

The attached schedule - **Appendix C** provides details of the completed projects and bears testimony to the multi-disciplined approach of the company.





## MORE ABOUT US

---

**Safety and quality assurance** are an integral part of our operations. Where necessary, and when required by the Client, the Company is able to offer training in related industry skills with particular reference to the largely unskilled segment of the workforce. During the last 5 years the South African Government has committed itself to job creation and, to this end, has initiated the implementation of an increasing number of labour intensive and emerging contractor-based contracts.

**Norland Group** has successfully completed a variety of such projects to the satisfaction of the Client and the communities in which the projects were executed.





## OUR REPUTATION

---

Our professional conduct and relationships with leading Consulting Engineers bears testimony to our **reputation and integrity**.

**Appendix D** is a list of some of the Clients and **Appendix E** is a list of some of Consulting Engineers the Company has worked with over the years.





## OUR EQUIPMENT

---

Most of the plant and equipment used in the execution of Contracts is sourced from our own resources which **enhances our independence and mobility.**

The Company has a **well-organized** and **equipped central workshop** in **East London** and a **regional office with a workshop** in **Mthatha** to service and maintain its construction plant thus ensuring delivery on time.





## APPENDIX A: COMPANY INFORMATION AND CONTACT DETAILS

### NORLAND CONSTRUCTION (PTY) LTD

#### COMPANY INFORMATION

<b>Company Registration Number</b>	2007 / 015793 / 07
<b>VAT Registration Number</b>	4900 101 504
<b>CSD Registration Number</b>	MAAA0031023
<b>CIDB Registration Number</b>	109 058
<b>CIDB Grading</b>	8CE
<b>BBBEE Rating</b>	Level 1
<b>Year Established</b>	1970

#### CONTACT INFORMATION

##### HEAD OFFICE - EAST LONDON

**Group Email:** [norlandgroup@norland.co.za](mailto:norlandgroup@norland.co.za)  
**Tenders Email:** [tenders@norland.co.za](mailto:tenders@norland.co.za)  
**Physical Address:** 11 Mercury Road, Woodbrook  
East London 5201  
**Postal Address:** PO Box 5237, Greenfields  
East London 5208  
**Tel No:** 043 736 6294  
**Fax No:** 043 736 2603

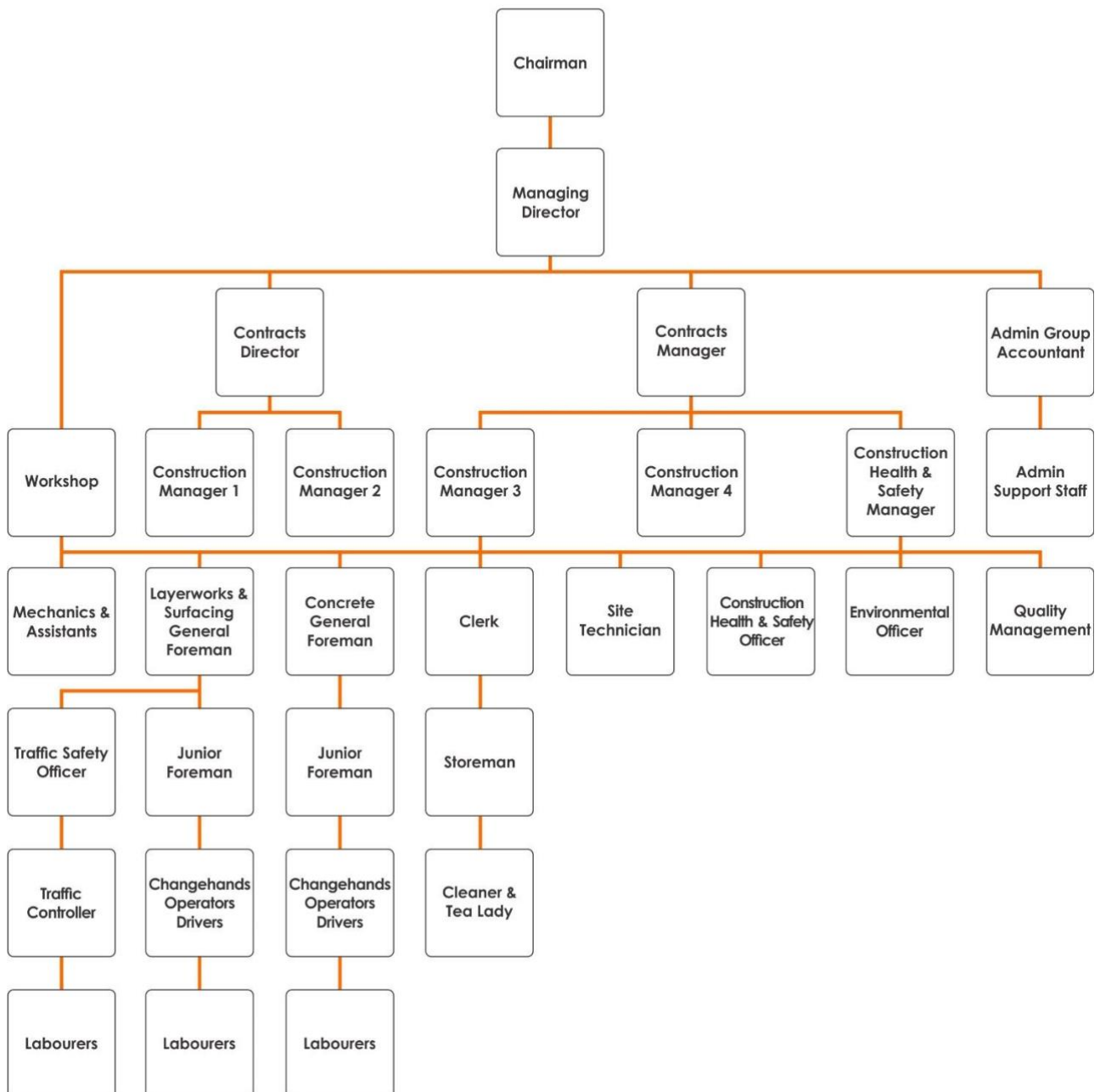
##### BRANCH - MTHATHA

**Physical Address:** Thornhill Road, Fort Gale  
Mthatha 5099  
**Postal Address:** PO Box 106  
Mthatha 5099  
**Tel No:** 047 531 3861  
**Fax No:** 086 455 9174



## APPENDIX B: COMPANY STRUCTURE

# NORLAND GROUP





## APPENDIX C: COMPANY EXPERIENCE

ROADS				
Client	Consultant	Project Description	Value	Date of Completion
Nelson Mandela University	Engineering and Advise Services	Upgrading of Entrances and Access Roads – Phase 1	R 17.3 M	Current
Eastern Cape Department of Transport	N/A	Framework Agreement for Adhoc Routine Maintenance for 3 years in Sakhisizwe LMA	R 36 M	Current
Eastern Cape Department of Transport	Engineering and Advise Services	Framework Agreement for Adhoc Routine Maintenance for 3 years in Sakhisizwe LMA	R 36 M	Current
Eastern Cape Department of Transport	Engineering and Advise Services	Routine Maintenance of Various Provincial Paved and Gravel Roads in the Amathole, O.R Tambo & Sarah Baartman Districts For A Period Of 30 Months	R 30.9M	Apr 2021
Eastern Cape Department of Transport	Deedscon Consult	Routine Maintenance of Various Provincial Paved and Gravel Roads in the Chris Hani, Joe Gqabi and Alfred Nzo Districts for a Period of 30 Months (3 Projects): LMA Sakhisizwe and Engcobo	R 33.8M	Nov 2019
Raymond Mhlaba Municipality	Sinakho Consulting	Alice Revitalisation Programme: Upgrading of Tyumi Road in the Raymond Mhlaba Municipality	R 22.3M	July 2019
Engcobo Local Municipality	Gibb	Construction of the Access Road to Extension 11 for Engcobo Local Municipality	R 17M	Nov 2018
Scribante Construction	N/A	Wilgeboom Bridge	R 5M	May 2018
Eastern Cape Department of Transport	Ugqoloma Consulting	Regravelling of DR08034 Section 1 in the Amathole District	R 11.6M	Mar 2018
SANRAL	Delta Bec	Regravelling of Access Roads in the Ingquza Hill LMA, Flagstaff and Holy Cross	R 17.5 M	Oct 2017

SANRAL	Delta Bec	Regravelling of Access Roads in the Ingquza Hill Local Municipality Area	R 17.6 M	Oct 2017
Eastern Cape Department of Transport	Delta Bec	Mbhashe LMA Routine Road Maintenance	R 22 M	Mar 2017
Eastern Cape Department of Transport	Delta Bec	Mnquma LMA Routine Road Maintenance	R 20 M	Mar 2017
SANRAL	SANRAL PE	Construction of Gravel Access Roads in the Mbhashe Local Municipality	R 22 M	Sep 2016
SANRAL	Engineering and Advise Services	Flood Damage/Rehabilitation Repairs to Boesmanshoek Pass	R 4.8 M	May 2015
Eastern Cape Department of Transport	Umpisi Engineers	Routine Road Maintenance of Gravel Provincial Roads: Camdeboo Local Municipal Area in the Cacadu District	R 25 M	Aug 2015
Eastern Cape Department of Transport	MBSA Consulting	Upgrading of Ugie Location Roads to Surface Standard Phase 1 +/- 5.5km	R 44.9 M	Mar 2015
SANRAL	Hatch Goba	Rehabilitation of N6 Route, Sections 3 & 4 Between Ezibeleni (KM 55.6) & JJ Serfontein (KM 2.0): Phase 2	R 102 M	Jun 2012
Eastern Cape Department of Transport	Randall Moore	Routine Road Maintenance Ngcobo Area	R 50 M	Jan 2011
King Sabata Dalindyebo Municipality	MBSA Consulting	Nqadu West Surfaced Road	R 8.4 M	Oct 2010
Eastern Cape Department of Transport	BKS PE	Routine Road Maintenance Ndlambe Area	R 46 M	Oct 2010
Eastern Cape Department of Transport	BKS PE	Routine Road Maintenance Makana Area	R 52 M	Oct 2010
Eastern Cape Department of Transport	KV3 Consulting	Upgrading of Access Road to Mngqesha Great Place	R 20 M	May 2010



## MUNICIPAL INFRASTRUCTURE

Client	Consultant	Project Description	Value	Date of Completion
Chris Hani District Municipality	Element Consulting	Molteno Water Treatment Works – Phase 1, Contract B – Construction of 500mm Diameter Supply Main and 2.75 Mℓ Reservoir	R 12 M	Current
Walter Sisulu University	Bosch Projects	Walter Sisulu University Emergency Water Supply Scheme	R 11.7 M	Current
Chris Hani District Municipality	Sinakho/SBA JV	Sitoleni WTW, Rising Main & Access Road	R 99M	Dec 2017
Engcobo Local Municipality	Gibb (Pty) Ltd	Construction of the Access Road to Extension 11 for Engcobo Local Municipality	R 13.6M	Aug 2017
Amatola Water	UWP Consulting	New Bulk Gravity Sewers, Sewage Pump Stations and Rising Mains in Support of BNG Phase 1A: Maydene Farm in Mthatha	R 49.1M	Mar 2016
Amatola Water	Gibb (Pty) Ltd	KSD PI: Construction of 10ML Fairfield Reservoir	R 22.6M	Oct 2015
OR Tambo District Municipality	Gibb (Pty) Ltd	Thornhill Water Treatment Works	R45.6M	May 2015
Chris Hani District Municipality	Camdekon / Hekima	Cluster 4 Water Backlog Project Ncora Scheme Bulk Pumping, Water Treatment Works & Reservoir	R 63.6M	Apr 2015
Amatola Water	Aurecon EL	Sidwadweni Regional Water Supply Scheme	R 74M	July 2014
Chris Hani District Municipality	N/A	Cluster 9 Phase 2 Bulk Water Backlog Project	R 25.3M	Jun 2014
OR Tambo District Municipality	HHO Africa	Upper Culunca RWSS: Construction of Cengcane Dam	R 32.6M	Jun 2014
Amatola Water	Aurecon EL	Coffee Bay Regional Water Supply Scheme	R 105M	Feb 2012
Sisonke District Municipality	Aurecon	Kokstad Waste Water Upgrade	R 28M	May 2010
Amathole District Municipality	Stemele Bosch	Mbashe North Water Supply Scheme – Water Treatment Works & Pumping Main	R 51.9M	Apr 2009

## BUSINESS INFRASTRUCTURE

Client	Consultant	Project Description	Value	Date of Completion
Tembuland Gas	N/A	Tembuland Gas Retaining Walls and Concrete	R 1 M	Aug 2021
Purple Rain Properties	Sinakho Consulting	Peddie Break in Concrete Median and Related Civil Works	R 2.3 M	Dec 2020
Transtruct	Boundary Architects	Construction of Gabion Wall, AVBOB - Mthatha	R 1.05 M	Dec 2017
Down Stream Trading	Gibb (Pty) Ltd	Triple Point Township Services	R 17 M	Aug 2008
OR Tambo District Municipality	N/A	New Parking Areas for Myezo Park Offices	R 3.2 M	Feb 2007
Sunilaws Office Park Beacon Bay	N/A	Roads & Parking	R 3.5 M	Nov 1998

## TOWNSHIP DEVELOPMENTS

Client	Consultant	Project Description	Value	Date of Completion
Eastern Cape Human Settlements	Bosch Projects	Oceanview 1500 Housing Project – Construction of 1500 Internal Services for Oceanview 1500	R 46.9 M	Oct 2019
ABSA DevCo	Bigen Africa L Niemann	Construction of Roads and Internal Services – Thornhill Sustainable Integrated Development Project-Phase 1A	R 30.7 M	Sep 2009



## APPENDIX D: SOME OF OUR CLIENTS

### CLIENTS



## APPENDIX E: SOME OF OUR CONSULTING ENGINEERS

### CONSULTING ENGINEERS

**AECOM** **HATCH** **V3 CONSULTING ENGINEERS** **hho**



**bigen®**  
Doing good while  
doing business



**ELEMENT**  
Consulting Engineers  
A FIFTH DIMENSION TO ENGINEERING

**LUKHOZI**  
CONSULTING ENGINEERS



**SINAKHO**  
CONSULTING

**cbm africa**  
consulting engineers

**BOSCH**  
PROJECTS

**iXengineers**  
Infrastructure Excellence

**HEKIMA GROUP**



**MALUTI GSM**  
Consulting Engineers

**MARISWE**  
IMPROVING LIVES  
ENGINEERING SOLUTIONS

**MOTT  
MACDONALD**

**DELTA**  
built environment consultants

**HSC**  
CONSULTING

**UGQOLOMA**  
CONSULTING

**GIBB**

**MBSA**  
CONSULTING  
Consulting Engineers • Civil and Electrical

**ZUTARI**  
IMPACT. ENGINEERED.

**MSBA Madan Singh Bester & Associates cc**

Consulting Civil & Structural Engineers



**BABEREKI**  
CONSULTING ENGINEERS



**RON BEARD ASSOCIATES**  
CONSULTING ENGINEERS

**NORLAND**  
CIVIL ENGINEERS AND CONTRACTORS